

Version 2017.2

October 2017



**Techlog**

Because every well counts

## Installation and Licensing Guide

**Schlumberger**

## Copyright Notice

Copyright © 2017 Schlumberger. All rights reserved.

This work contains the confidential and proprietary trade secrets of Schlumberger and may not be copied or stored in an information retrieval system, transferred, used, distributed, translated or retransmitted in any form or by any means, electronic or mechanical, in whole or in part, without the express written permission of the copyright owner.

## Trademarks & Service Marks

Schlumberger, the Schlumberger logotype, and other words or symbols used to identify the products and services described herein are either trademarks, trade names or service marks of Schlumberger and its licensors, or are the property of their respective owners. These marks may not be copied, imitated or used, in whole or in part, without the express prior written permission of Schlumberger. In addition, covers, page headers, custom graphics, icons, and other design elements may be service marks, trademarks, and/or trade dress of Schlumberger, and may not be copied, imitated, or used, in whole or in part, without the express prior written permission of Schlumberger. Other company, product, and service names are the properties of their respective owners.

Techlog® is a mark of Schlumberger. An asterisk (\*) is used throughout this document to designate other marks of Schlumberger.

## Security Notice

The software described herein is configured to operate with at least the minimum specifications set out by Schlumberger. You are advised that such minimum specifications are merely recommendations and not intended to be limiting to configurations that may be used to operate the software. Similarly, you are advised that the software should be operated in a secure environment whether such software is operated across a network, on a single system and/or on a plurality of systems. It is up to you to configure and maintain your networks and/or system(s) in a secure manner. If you have further questions as to recommendations regarding recommended specifications or security, please feel free to contact your local Schlumberger representative.



# Contents

<b>Information Resources .....</b>	<b>5</b>
Schlumberger Product Documentation .....	5
About Schlumberger.....	5
Online Documentation.....	5
Typestyle Conventions.....	5
Alert Statements .....	5
Contacting Schlumberger .....	6
Technical Support.....	6
<b>Overview .....</b>	<b>7</b>
Introduction .....	7
Audience.....	7
Techlog Distribution .....	7
Upgrade of the Schlumberger License Server.....	7
Licensing .....	7
<b>System Requirements .....</b>	<b>8</b>
Introduction .....	8
Printers Compatibility .....	9
<b>Installation .....</b>	<b>10</b>
Download the Installation Package .....	10
Install Techlog.....	10
Silent mode installation.....	10
Uninstall Techlog.....	11
Uninstall Techlog from the Start menu.....	11
Uninstall Techlog from the Control menu.....	11
Company folder.....	11
File System Permissions.....	11
Network Settings.....	12
Licensing Techlog .....	12
Configuration with Schlumberger Licensing .....	12
Downloading the Schlumberger Licensing tool.....	12
Installing the Schlumberger Licensing tool.....	12

Configuring the License File .....	12
Configuring the License Server .....	13
Configuration with Techlog Wizard .....	13
Configuring the License Server .....	13
License Borrowing.....	13
Python Script.....	13
One click borrowing .....	13
Standalone Check borrowing Python script.....	13
FlexNet Publisher.....	14
Codemeter Dongle licensing.....	15
License upgrade .....	15
Formal request.....	15
Codemeter run time installation.....	15
Configuring Schlumberger Licensing .....	15
Connecting to an External License Server .....	16
<b>Techlog Upgrade .....</b>	<b>17</b>
Automatic upgrade .....	17
<b>Configure Studio connection .....</b>	<b>18</b>
Prerequisites .....	18
Studio server configuration.....	18
Setting up Studio as preferred collaboration environment.....	19
<b>Troubleshooting .....</b>	<b>20</b>
Server / Daemon .....	20
Frequent FlexNet User Error.....	20
Error Code: Bad Encryption Code.....	20
Licensing.....	20
Hostid does not match the license file.....	20
Network connection failed .....	20
If the firewall is enabled.....	21
Running the One click borrowing script gives error .....	21
License Borrow Support Not Enabled error .....	22
Issue at Techlog Opening.....	22
File Import.....	22
File Export.....	22

# Information Resources

## Schlumberger Product Documentation

### About Schlumberger

Schlumberger is the leading oilfield services provider, trusted to deliver superior results and improved E&P performance for oil and gas companies around the world. Through our well site operations and in our research and engineering facilities, we develop products, services, and solutions that optimize customer performance in a safe and environmentally sound manner.

### Online Documentation

Documentation is provided in the following electronic formats via the listed location:

- Techlog 2017 Installation and Licensing Guide (Adobe® Acrobat® PDF file)
- Online help: **Techlog Help > User guide** menu

You can use Adobe® Reader to read the PDF file. Adobe Reader installation programs for common operating systems are available for a free download from the Adobe Web site at [www.adobe.com](http://www.adobe.com).

### Typestyle Conventions

The following conventions are observed throughout this guide:

- **Bold** text is used to designate file and folder names, dialog titles, names of buttons, icons, and menus, and terms that are objects of a user selection.
- *Italic* text is used for word emphasis, defined terms, and manual titles.
- Monospace text (`Courier`) is used to show literal text as you would enter it, or as it would appear onscreen.

### Alert Statements

The alerting statements are Notes, Cautions, and Warnings. These statements are formatted in the following style:

- **Note:** Information that is incidental to the main text flow or to an important point or tip provided in addition to the previous statement or instruction.
- **Caution:** Advises of machine or data error that could occur should the user fail to take or avoid a specified action.
- **Warning:** Requires immediate action by the user to prevent actual loss of data or where an action is irreversible, or when physical damage to the machine or devices is possible.

## Contacting Schlumberger

### Technical Support

Schlumberger has sales and support offices around the world. For information on contacting Schlumberger, please refer to the information below.

<b>Technical Support for SIS software</b>	<a href="#">Technical Support Website</a>
<b>Internet</b>	<a href="http://www.slb.com">www.slb.com</a>

# Overview

## Introduction

This guide explains how to install Techlog.

The guide also explains the procedures required after the installation:

- Defining your license environment
- Using license borrowing
- Requesting the MAC address license to be upgraded to Codemeter Dongle license

This guide explains how to use the Techlog Upgrade Tool. More information is available in the dedicated Upgrade tool document when opening the online help from Upgrade tool interface. This guide also explains how to configure Studio connection.

## Audience

This guide is for the users installing Techlog on their workstation.

## Techlog Distribution

The [Support Portal](#) distributes Techlog.

Techlog is supported on 64-bit architectures. You can install this version on the following types of workstations:

- Microsoft® Windows 10
- Microsoft® Windows 7® SP1 Enterprise/Ultimate
- Microsoft® Windows Server® 2012 R2 (64-bit)
- Microsoft® Windows Server® 2016 (64-bit)

---

**Note:** Techlog 2017 does not support Microsoft Windows 8.

---

## Upgrade of the Schlumberger License Server

Techlog 2017 requires the new 2017 version of Schlumberger Licensing Tool. The old server will not work with the 2017 software releases and the license server should be upgraded to avoid unnecessary downtime. Schlumberger License Server 2017 is compatible with all supported Techlog versions (2014, 2015, 2016, and 2017).

## Licensing

To run Techlog, you need a valid license for this release. The license can be configured either locally on your computer or on a central license server.

Techlog uses FlexNet Publisher® licensing to provide a secure licensing solution. Once Techlog is successfully installed on your computer, you must install the license to define the amount of accessible modules. Refer to the [Licensing Techlog](#) section for more information.

# System Requirements

## Introduction

Techlog has minimum system requirements for installation and use. Before installing the product, ensure that your system meets the requirements described in this section.

### Reminders

- Running the Techlog software with the **Minimum Supported** configuration is not recommended.
- When working with data containing arrays and images, use the **Recommended** configuration
- We recommend that you activate Windows Virtual memory paging default. This enables the system to use the hard disk to store information usually stored in RAM. To modify this option: go to **Windows control panel > System and Security > System > Advanced system settings > Click Settings in the Performance field > Click the Advanced tab > Click Change in the Virtual memory field** to change the settings.
- We recommend that you exclude Techlog project storage folder from anti-virus default scan.

## System Requirements

### Minimum Supported

<b>Operating System</b>	Windows 7 64-bit
<b>Processor</b>	Multi-core processor (best with a fast clock speed and high cache)
<b>Memory</b>	8 GB
<b>Display</b>	Single display 1280 x 1024 pixels
<b>Graphics</b>	NVIDIA Quadro® mid-range card with drivers version : 385.69
<b>Network</b>	1 Gbps
<b>Disk storage</b>	Hard-Disk Drive (HDD)

### Recommended

<b>Operating System</b>	Windows 7 64-bit
<b>Processor</b>	Quad-core processor (best with a fast clock speed and high cache)
<b>Memory</b>	16 GB
<b>Display</b>	Dual display with 1920 x 1200 pixels
<b>Graphics</b>	NVIDIA Quadro® mid-range card with drivers version : 385.69
<b>Network</b>	1 Gbps
<b>Disk storage</b>	Solid State Drive (SSD)

---

**Note:** To run Techlog efficiently, Schlumberger recommends at least 16GB of RAM. The total system memory must be greater than the memory used by the application. This ensures that your operating system has dedicated RAM so that you do not have to use your page file (disk memory). For advanced graphical 3D display and image processing Schlumberger recommends at least 32GB of RAM.

---

---

**Warning:** Techlog requires the SMB 2.0 (or newer) protocol to work on networks.

---



## Printers Compatibility

Printer	Name
HP	DesignJet (1055 CM)
EPSON	Stylus pro
Printrex	
Iterra	
Standard A4, Letter printers (HP, CLJ 3700/4730 ...).	

# Installation

## Download the Installation Package

To install Techlog, you need the installation package. If you have a DVD, you can use it. Otherwise, download Techlog from the [Support Portal](#).

## Install Techlog

1. Insert the DVD or navigate to the location where you downloaded the installation files.
2. Unzip the installation package to install the folder tree and click **Install Techlog**. Or in the DVD browser, from the root folder, click **Install products** and then click **Install Techlog**.  
The **InstallShield Wizard** message appears while the Techlog installer is extracted. When it is finished, the **Installer Language** panel opens.
3. Select a language and click **OK**.
4. On the **Welcome** panel, click **Next**.
5. On the **License agreement** panel, read the agreement, click **I agree**, and click **Next**.
6. On the **Choose Install Location** panel, choose the folder where you want to install Techlog, and then click **Next**.
7. Click **Install**.
8. When the installation is finished, click **Finish**.

### Silent mode installation

The procedure for the silent mode installation is as follows. This command installs Techlog in **C:\TechlogFolder**.

1. Open the command prompt (type **cmd** in Windows search bar).
2. Type the following command: `Install Techlog.exe /Silent /InstallFolder=C:\TechlogFolder`

The parameter **/Silent** is used for the silent mode. The parameter **/InstallFolder** is used for the file location.

## Uninstall Techlog

Uninstall Techlog  
from the Start menu

Uninstall Techlog  
from the Control menu

You can uninstall Techlog from the **Start** menu or the **Control Panel**.

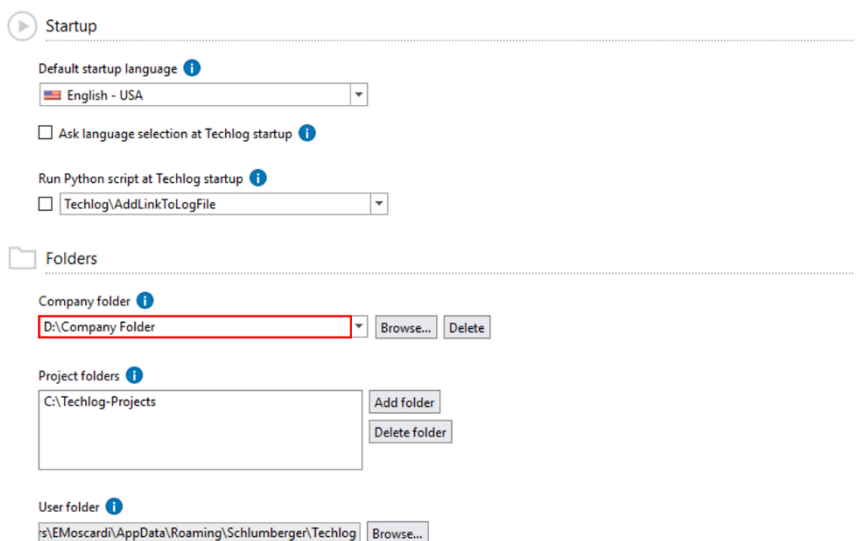
Click the **Start** button > **All Programs** > **Schlumberger** > **Techlog XXXX.x** > **Uninstall Techlog XXXX.x**.

1. Click the **Start** button > **Control Panel** > **Programs** > **Uninstall a program**.
2. In the list of currently installed programs, click **Techlog**, and then click **Uninstall**.

## Company folder

Define the **Company folder** according to the organization to share and provide standard companies Techlog objects as scripts, templates, families.

### Options



Options

Startup

Default startup language ⓘ  
English - USA

☐ Ask language selection at Techlog startup ⓘ

Run Python script at Techlog startup ⓘ  
☐ Techlog\AddLinkToLogFile

Folders

Company folder ⓘ  
D:\Company Folder Browse... Delete

Project folders ⓘ  
C:\Techlog-Projects Add folder Delete folder

User folder ⓘ  
%EMoscardi\AppData\Roaming\Schlumberger\Techlog Browse...

To prevent unauthorized modifications, access should be controlled on the Company Folder Directory. Edit privileges should be restricted to Company Folder Administrators only. All other authorized users should only have at most read privileges, and non-authorized users should have all privileges denied.

## File System Permissions

To ensure that files containing sensitive data are only accessible to the appropriate users, it is important that you review Techlog Folders (Company, Project, Template, User, and Temporary) permissions with IT administrator when configuring the file system that Techlog will use to store information.

## Network Settings

Prior to using a network file share for Techlog folders and files, the following settings should be reviewed with your IT Administrator:

- SMB 2.0 or equivalent is required to ensure files can be saved properly
- Optionally enable [SMB Signing to improve security of network communication](#)
- Optionally enable [SMB 3.0 Encryption](#). SMB 3.0 is only available with Windows Server 2012 and Windows 8+ and encryption should only be enabled if both the server and clients have support

## Licensing Techlog

After you installed Techlog, you must install the licenses and define which modules are accessible.

Configuration with  
Schlumberger Licensing

### Downloading the Schlumberger Licensing tool

1. Go to the [Support Portal](#).
2. Log in to the site.
3. Click **Support Resources > Software Download**.
4. On the **Welcome Message** page, click **Continue**.
5. In the **Product Group Name** list (in the upper-left corner), click **Utilities** and in the **Product List**, click **FLEXIm**.
6. In the table of FLEXIm downloads, click the **Download** icon for the Schlumberger Licensing tool file you need.

### Installing the Schlumberger Licensing tool

1. From the downloaded files, run **SchlumbergerLicensing201X.exe**.  
The installation wizard opens.
2. On the **Welcome** panel, click **Next**.
3. Complete the following steps in the **Destination Folder** panel:
  - a. If you want to change the location of the program files, click **Change** and then navigate to a new location. If you are installing on a central license server, select a folder on the central license server.
  - b. Click **Next**.
4. On the Ready to install panel, click **Install**.
5. When the installation is complete, on the last panel select **Launch Schlumberger Licensing** and then click **Finish**.  
You are ready to configure the Techlog license.

### Configuring the License File

If you received a \*.lic license file:

1. Click the **Start** button > **Programs > Schlumberger > Schlumberger Licensing 201x > Schlumberger Licensing**.
2. Click **Add license folder** and browse to the \*.lic file folder.
3. Choose the folder and validate by clicking **OK**.
4. Click **Start** to start the license service.

---

**Note:** A window might open informing you that the changes are immediately applied, and that the setting is written in the operating system registry: click **OK** to continue.

---

- Click **OK** to save your license configuration.

### Configuring the License Server

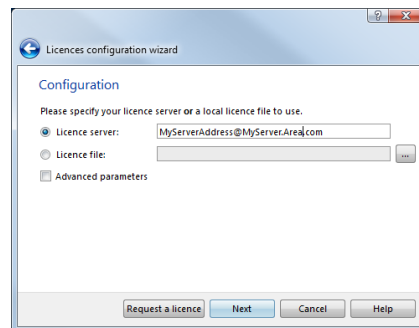
If you work in a company using the license server, you must specify the license server address in the **License server** field.

## Configuration with Techlog Wizard

### Configuring the License Server

If you work in a company using the license server:

- Specify the license server address in the license server field.
- Use the **Schlumberger licensing** tool and map the license file.
- Ensure that the **Schlumberger licensing** tool is running.



If you work using a license file:

- Specify license server address as `@localhost` in the **License server** field.
- Ensure that the **Schlumberger licensing** tool is running.

## License Borrowing

License borrowing is useful to work *off-line* without a proper connectivity or no connectivity to the license server, neither license file nor possibility to get one.

---

**Important:** Ask for the borrowing feature when you order the license.


---

### Python Script

You can perform the license borrowing with Python scripts.

#### One click borrowing

In Techlog:

- Click the  **Menu > Licensing > One click borrowing**.  
The script automatically borrows for 30 days.
- Launch Techlog with no connection to the license server to ensure that the borrowing was successful. If the borrowing fails, run again the script.

#### Standalone Check borrowing Python script

In Techlog:

- Click the **Utility** tab > **Python explorer > Techlog > Tools > Check borrowing** to open the script.
- Run the script (use the **F7** keyboard shortcut key) to prepare FlexLM for the borrowing.
- Close Techlog and reopen any Techlog version using the same daemon for which you want to borrow.

4. Launch Techlog with no connection to the license server to ensure the borrowing was successful. If the borrowing fails, run the **clear borrowing.reg** script to clear the registry entries (this script is located in the Techlog install and tools folders), and then repeat steps 1-3.


---

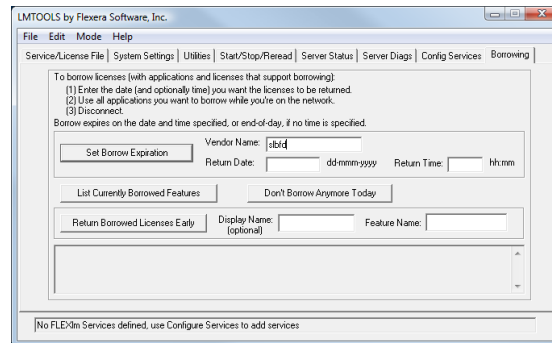
**Warning:** Techlog license borrowing entries are deleted while running the clear borrowing script. If a feature cannot be returned due to a network or server issue, a window opens. You can choose the following options:

- Continue: the borrowing process continues.
  - Force: the registry is cleaned up to consider that there are no more borrowed features. The features remain considered as borrowed on the server side. We recommend that you do not use this option.
  - Cancel: the borrowing process is canceled.
- 

## FlexNet Publisher

From Techlog:

1. Go to  **Menu > Licensing > FlexNet publisher** to open the FlexNet tool.
2. Click the **Borrowing** tab to set up the borrowed licenses.



3. Set the **Vendor Name** field to `slbfd` to avoid any conflict with other software and indicate that the borrowing is done from the `slbfd` daemon.
4. Set the **Return Date** and **Return Time** fields for the license. The return date must be within 30 days.
5. Click **Don't Borrow Anymore Today** to avoid compatibility with other software using the same daemon but not supporting borrowing.
6. Click **Set Borrow Expiration**.
7. Close **Techlog**.
8. Reopen all the Techlog versions using the same daemon for which the borrowing must be done with an existing or new project and enable all the modules you want to use from the **Module Manager** window.
9. Close **Techlog**.
10. Launch Techlog with no connection to the license server to ensure the borrowing was successful.
11. If the borrowing failed, run the **clear borrowing.reg** script to clear the registry entries (this script is located in the Techlog install and tools folders), and repeat the previous steps.

---

**Warning:** Techlog license borrowing entries are deleted while running the clear borrowing script. The features remain considered as borrowed on the server side. We recommend that you do not use this option.

---

## Codemeter Dongle licensing

The following section explains how to get Codemeter Dongle license working with Techlog 2017 versions.

### License upgrade

#### Formal request

The MAC address license server upgrade to Codemeter Dongle license must be explicitly requested to your Business Manager or Account Manager.

Business and Account Managers can refer to the Procedure for use of Codemeter Dongles for Techlog document.

#### Codemeter run time installation

The following steps are extracted from the **Schlumberger Licensing User Guide** available from [Support Portal](#). In order to use dongle-based licenses, you must install the **CodeMeterRuntime** application. It is available on the software DVD in the same directory than the SLB Licensing installer or can be downloaded from the WIBU systems website. The minimum required version for Windows is 4.50c.

1. Download the correct runtime version for your operating system from the [WIBU systems website](#).
2. Once downloaded, double click **CodeMeterRuntimeXX.exe**.
3. When the installation wizard opens, follow the instructions clicking **Next** on each window to proceed.
4. Install the runtime and when installation is completed click **Finish**.

#### Configuring Schlumberger Licensing

1. If you are using dongle-based licensing, insert the dongle into the USB port of your computer.
2. Run the Schlumberger License Server configuration tool from **Windows** start menu: **Start > All Programs > Schlumberger > Schlumberger Licensing > Schlumberger Licensing**.
3. Click **Add License File** and browse to the directory where you saved the license file. In the configuration tool, your license file has been added to the list of license files.
4. Select **Start Automatically with Windows** for the license to be automatically available every time you restart your computer.
5. Click **Start** to launch the license service.
6. Click **OK** to apply the changes.

The license server is set to **@localhost**. This is the address used by the application when attempting to find licenses on your local computer. You do not need to make changes as long as you only have a local license server.

Click **Status** to display the licenses available and to check any potential issue with the license features.

In case of issue, click **Diagnostics** to obtain more information on the license file(s) and the license server and to enable the access to the FlexNet debug log file.

The **Troubleshooting** appendix describes the known issues and workarounds. If you cannot solve the issue and contact Schlumberger support, please always provide the contents of the diagnostics.

### Connecting to an External License Server

To connect to a license server, Schlumberger applications require the server address. The address is in portnumber@machine.domain or portnumber@IP\_address. For example, if the server is named server1 and using port number 27000, the address is 27000@server1. If you do not know the license server address, contact your system administrator.

---

**Note:** If the license server has been configured with a port number within the default range of 27000–27009 the port number can be dropped. In this case, @server1 will also be a valid address.

---

1. In the Schlumberger license window, enter the server details in the **Manage Remote Servers** panel.
2. Click **Add license server** to update the environment variable.

To remove the license server details, select the entry in the list and click **Remove license server**.



# Techlog Upgrade

Moving to a new version of Techlog will require upgrading the format of the project. Once you upgraded to a new version of Techlog format, you cannot open the projects in the previous Techlog versions.

---

**Important:** Projects created using a version earlier than Techlog 2014 are not supported anymore.

---

## Automatic upgrade

In Techlog, click  **Menu** > **Project** > **Open project** to display the list of Techlog project files, then select an Outdated project > **Open**. You are requested to upgrade the project.

- If you select **OK**: the project will be automatically upgraded. The project will then be opened in the current version of Techlog. It will be impossible to open it in a previous version of Techlog and there will be no backup folder.

---

**Note:** The **automatic upgrade** locks the project during the process: it is not possible to work on it.

---

- If you select **Cancel**: the project will not be upgraded for the current version of Techlog. The project can be opened in a previous version of Techlog.

# Configure Studio connection

## Prerequisites

A Studio server needs to be accessed from Techlog. Please refer to the **Studio installation Guide 2017** for more information on how to install Studio environment (Studio server and Studio database).

**Note:** With Techlog 2017.2, Studio and Techlog do not support locale other than English. Installing a different locale for the server, database or Techlog will lead to unexpected behaviors and is not supported.

## Studio server configuration

A Studio server list can be defined in the CollaborationConfiguration.xml configuration file. The template of the file is located at path:

[TechlogInstallationFolder]\Collaboration\CollaborationConfiguration.xml

The file can be set under User or Company folders by creating a Collaboration folder. The path to the file must be as follows:

[YourUserFolder]\Collaboration\CollaborationConfiguration.xml

[YourCompanyFolder]\Collaboration\CollaborationConfiguration.xml

If the setting in the configuration file is available in both User and Company folders, the one in the User folder prevails.

The configuration file can be edited to specify the Studio servers list.

1. Open the configuration file in a text editor.
2. Find and update the lines below (in black).

```
<Studio>
  <!-- Studio servers list -->
  <Servers>
    <!--
    <Server>
      <Name>My server name</Name>
      <URL>server_host:server_port</URL>
    </Server>
    -->
    <Server>
      <Name>Server1</Name>
      <URL>http://xxxxxxxxx:50231</URL>
    </Server>
  </Servers>
</Studio>
```

3. Restart Techlog.

## Setting up Studio as preferred collaboration environment

Studio can be specified as preferred collaboration environment in the `CollaborationConfiguration.xml` configuration file. The template of the file is available in the path:

```
[TechlogInstallationFolder]\Collaboration\CollaborationConfiguration.xml
```

Edit the configuration file to specify Studio as preferred collaboration environment:

1. Open the configuration file in a text editor.
2. Find the line below.

“Studio” is an option for Studio.

```
<CollaborationSystem Studio="true"
```

3. Specify the following options for each system:

Active - “true” or “1”

Inactive - “false” or “0”

4. To reflect the change, restart Techlog.

---

**Note:** The Synchronization tool is still available. It can be set up as preferred collaboration system using the “SyncTool” option in the configuration file.

If the Techlog project has been connected to a Synchronization tool before, this connection overrides the configuration file settings until the project is unlinked from the current repository.

For XML repository update, refer to Synchronization Tool deployment guide available in Techlog DVD.

---

# Troubleshooting

## Server / Daemon

To ensure that the daemon works properly on the server, run `slbsls.exe -v` in a **Command Prompt**. The version used for the daemon should be printed. If an error occurs, try with an older version of the daemon (provided in the package).

## Frequent FlexNet User Error

You might receive the following FlexNet error message when you open Techlog:

Error Code: Cannot borrow that long

This error message means that you attempted to borrow a license for more than 30 days and Techlog cannot run. You need to re-borrow the license with an earlier return date. To do so, refer to the procedure described in the [FlexNet Publisher](#) section.

## Error Code: Bad Encryption Code

You might receive the following error message:

Error Code: Bad encryption code

This error message is displayed when a computer time change occurred and some files have a future date. The licensing library detects the future date files and then prevents the opening. You can check and search for future date files in the computer (on C: & D: drives), from the current date to a much extended one, including hidden files and sub-folders to your search.

To fix the issue, you must re-image the computer.

## Licensing

### Hostid does not match the license file

This might be due to a missing network device. Ensure that the Wi-Fi card (wireless) is switched on. If you use a laptop, plug in the power adaptor. Also try to enable all connections in network connections under the **Control Panel**.

### Network connection failed

Connection error\_ network connect to THIS\_HOST failed.

a. License file configuration:

THIS\_HOST is a default host name in license file.

It does not occur if you set the license to use it on a standalone workstation but it might occur if the computer calls its name as THIS\_HOST.

To avoid this issue, enter the correct host name in the license file.

=====

SERVER this\_host 0015c53766c6 1700

VENDOR slbsls

Modify the host name to reflect the workstation name and change the port number if it is already used by another application as described below:

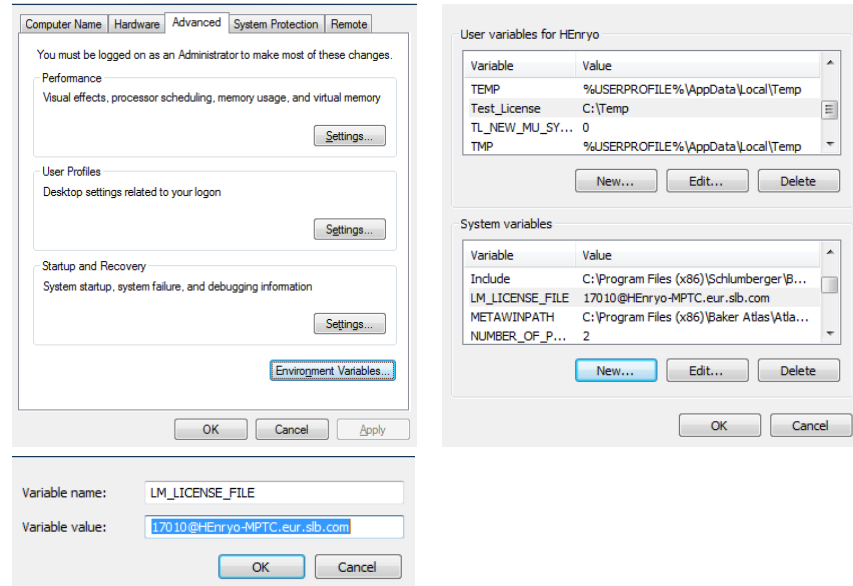
SERVER SITTIDET-OFTK 0015c53766c6 1701

VENDOR slbsls

=====

You can find the host name from **Start > Control Panel > System and Security > System**.

Modify the system environment SLBSLS\_LICENSE\_FILE (or LM\_LICENSE\_FILE) to include port@host\_name or port@ip\_address as in the following example port@host\_name.

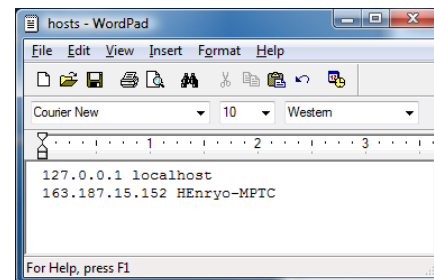


## b. Network configuration:

If a dynamic IP address is used with the DNS service, the use of port@hostname should not create an issue.

If a static IP address is used without the DNS service, the host name and IP address for all the client-servers, you must configure the workstation by modifying the host file in:

C:\WINDOWS\system32\drivers\etc\



In this case, you can see [17010@johndoe.eur.slb.com](http://17010@johndoe.eur.slb.com) or [17010@163.187.15.152](http://17010@163.187.15.152).

If the firewall is enabled

Contact your system administrator to disable the firewall or put an exception on Windows firewall.

Running the One click borrowing script gives error

If you receive the following error while running the One click borrowing script, run the script again. This is a FlexLM issue not related to Techlog.

```
lmborrow: Error, borrowed license doesn't match any known server license. (-128,595)
```

License Borrow Support Not Enabled error	<p>If you use Techlog, this error means that the license that you are attempting to use for borrowing does not support the borrowing.</p> <p>If you use Petrel, you must change the <b>Vendor Name</b> from <b>All</b> to <b>slbfd</b> in the <b>Borrowing</b> tab of FlexNet Publisher.</p>
Issue at Techlog Opening	<p>Some anti-virus software might crash Techlog at opening. If you experience this issue, add Techlog to the anti-virus exclusion list and reopen Techlog. Multi license quorum's settings might lead to a potential crash at Techlog opening. If a crash at Techlog opening occurs, the workaround is to reduce the number of quorum and reopen Techlog.</p>
File Import	<p>If the connection to the file system is interrupted on file import, depending upon the file format Techlog will handle the issue correctly by retrying and notifying the user of the issue. Some import type this failure may cause a Techlog failure causing the application to close.</p>
File Export	<p>If the connection is lost during a file export the state of the file may not be valid. Need to verify test cases and document issue.</p>