

# VISTA Desktop Seismic Data Processing Software for 2D VSPs

## Public Online Software Training — Houston, USA

Online

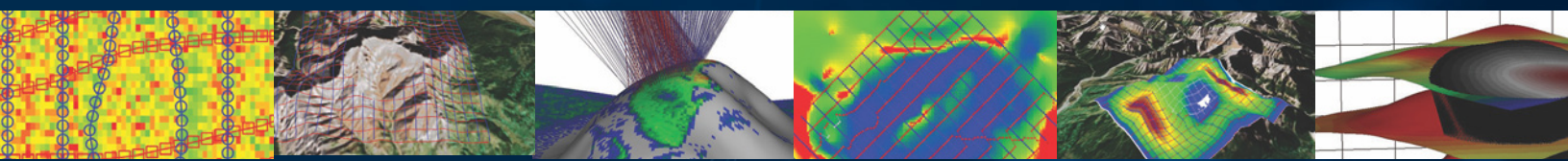


### Course Details

Date: June 15–18, 2020  
Instructor: Carlos Montana  
Time: 8 a.m.–noon CDT

### Registration

Contact Kevin Malave to register.  
E-mail: [KMalave@slb.com](mailto:KMalave@slb.com)  
Direct: +1 713 689 7150



**What:** Join us for an online training session in which we will review how to import, manipulate, QC, and apply flow commands to process 2D zero-offset and walkaway 2D vertical seismic profile (VSP) datasets using VISTA software.

**Why:** Use this course to

- introduce yourself to seismic data processing and QC
- become familiar with tools in the software
- learn about new features.

**Who:** Geologists and geophysicists involved in borehole operations and processing, field QC personnel, university students, and independent contractors.

### General Course Topics

- Dictionaries
- Flow commands
- Data loading
- Geometry QC
- First break picking methods
- Trace editing
- Time gates
- Seismic analysis
- LAS log viewing and editing
- Q estimation
- Sonic log calibration
- Wavefield separation techniques
- $f-k$  filter
- Corridor mute and stack
- Interactive hodogram analysis
- Automatic 3C rotation
- Seismic montage plotting

### Cancellation Policy

Course registration is not confirmed until payment is received in full. WesternGeco reserves the right to cancel any course. If a course is cancelled, students will be contacted by phone, e-mail, or both to arrange a training credit. Every effort will be made to reschedule a cancelled course or transfer registration to a later date. In the event of a date change, every attempt will be made to ensure that students are notified at least 5 business days prior to the course start date. Students may cancel their registration 10 business days prior to the course start date for a full refund. No credit or refund will be provided for any course registration cancelled less than 10 business days prior to the course start date. Registered participants unable to attend the course may send a substitute. WesternGeco must be notified of any participant substitutions prior to the course start date.

[slb.com/VISTA](http://slb.com/VISTA)