

# VISTA Desktop Seismic Data Processing Software

## Public Online Software Training — Houston, USA

Online

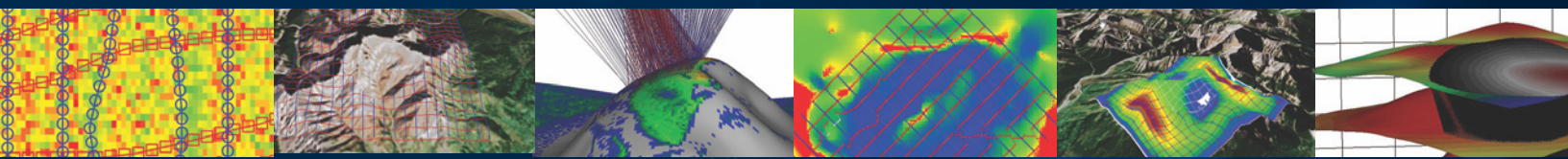


### Course Details

Date: June 1–4, 2020  
Instructor: Carlos Montana  
Time: 8 a.m.–noon CDT

### Registration

Contact Kevin Malave to register.  
E-mail: [KMalave@slb.com](mailto:KMalave@slb.com)  
Direct: +1 713 689 7150



**What:** Join us for an online training session in which we will review how to import, manipulate, QC, and apply flow commands to process 2D and 3D datasets using VISTA software.

**Why:** Use this course to

- introduce yourself to seismic data processing and QC
- become familiar with tools in the software
- learn about new features.

**Who:** Geologists and geophysicists involved in 3D operations, seismic processors, field QC personnel, university students, and independent contractors.

### General Course Topics

- Importing 2D and 3D datasets and dictionaries
- Project management
- Seismic window display
- Data manipulation and QC
- Geometry setup and QC
- Attribute window
- First break picking
- Refraction statics
- Creating, editing, and running processing flows
- Frequency analysis tools
- Signal enhancement and noise attenuation tools
- Interactive velocity analysis
- Creation of common midpoint (CMP) stacks
- Residual statics
- Poststack migration

### Cancellation Policy

Course registration is not confirmed until payment is received in full. WesternGeco reserves the right to cancel any course. If a course is cancelled, students will be contacted by phone, e-mail, or both to arrange a training credit. Every effort will be made to reschedule a cancelled course or transfer registration to a later date. In the event of a date change, every attempt will be made to ensure that students are notified at least 5 business days prior to the course start date. Students may cancel their registration 10 business days prior to the course start date for a full refund. No credit or refund will be provided for any course registration cancelled less than 10 business days prior to the course start date. Registered participants unable to attend the course may send a substitute. WesternGeco must be notified of any participant substitutions prior to the course start date.

[slb.com/VISTA](http://slb.com/VISTA)