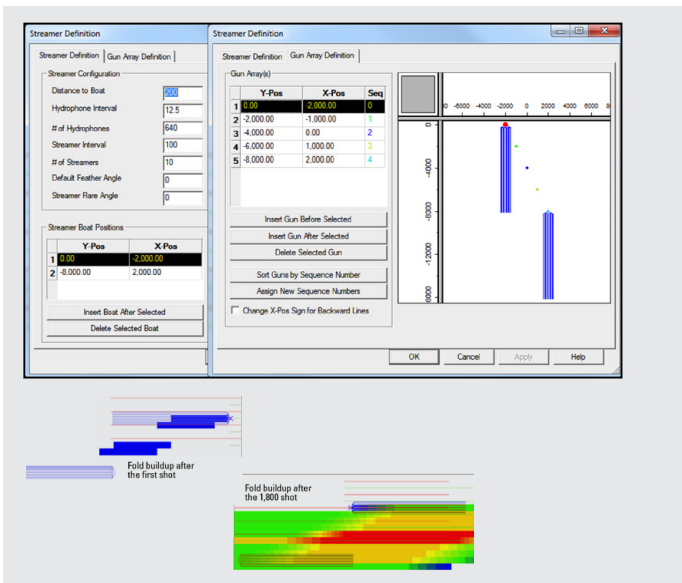


### New Features Version 2015

#### Create staggered streamer designs

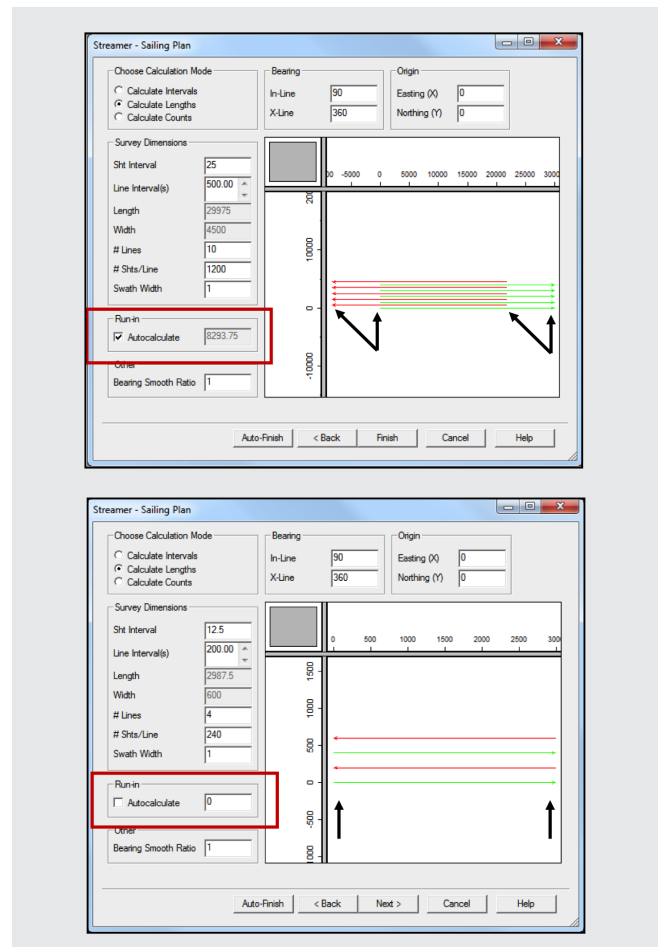
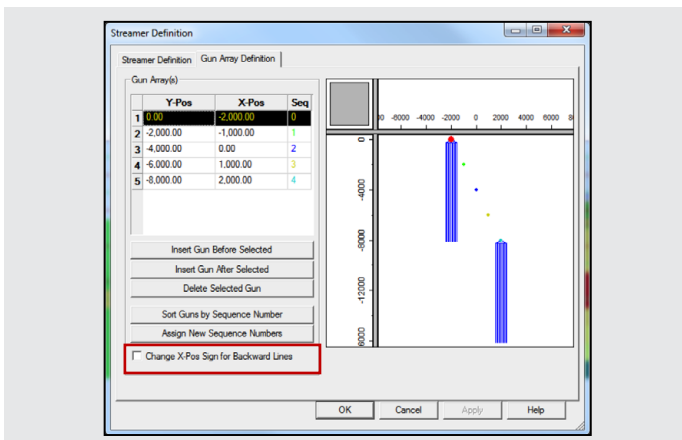
Users are now able to design staggered streamer vessel surveys in OMNI 3D—meeting the design needs of today’s marine surveys. Users can also include any number of streamer and source boats in arbitrary locations within the same streamer design. From the Theoretical Model Streamer, quickly add additional streamer and source vessels using the updated, flexible dialogs. Users no longer need to listen to other surveys for staggered designs.



**Automatic and user-defined streamer run-in distances**  
 OMNI 3D software automatically computes streamer run-in distance to align midpoint coverage between sail directions. It also allows for user-specified run-in distances.

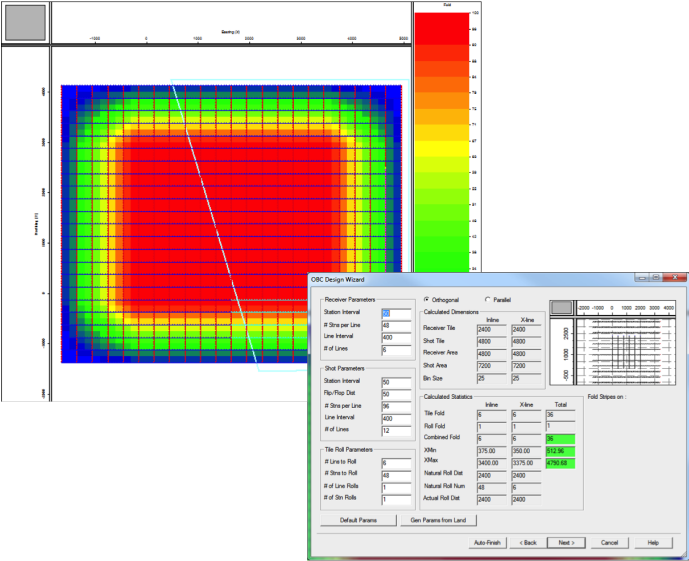
#### Mirror sources on backward streamer lines

OMNI 3D software offers the flexibility to mirror sources on backward streamer lines about the sail line. When the option is not selected, sources remain on same side as forward lines. When the option is selected, sources switch to the opposite side of the sail line for backward lines.



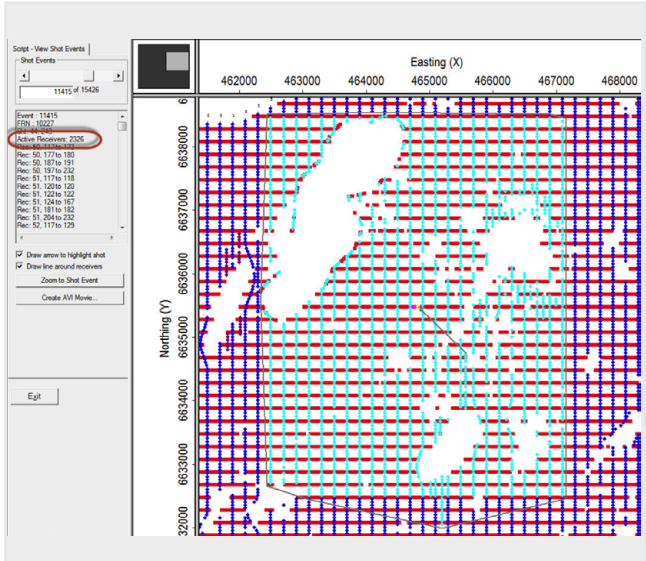
**Create land to OBC equivalent surveys**

Users can now easily create ocean-bottom cable (OBC) surveys with the same offset and azimuth requirements as land surveys, which is especially beneficial for transition zone surveys.



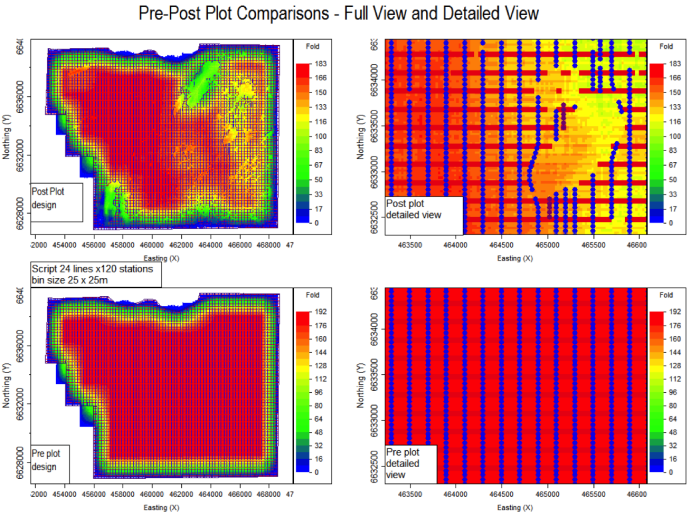
**Review number of active receivers**

With the addition of the number of active receivers shown in the View Events wizards, users can now quickly review the number of active receivers for any given shot.



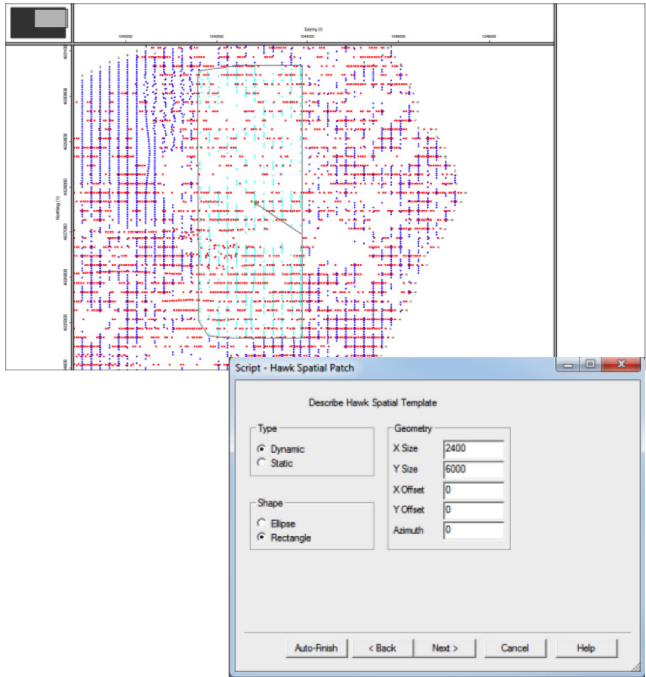
**Enhanced map boxes of the plot view**

Users can now easily perform interactive side-by-side on-screen comparisons of multiple surveys and their analyses.



**Full support of nodal technology**

The INOVA® Hawk system is the first of OMNI 3D's support of nodal technology. OMNI 3D software can import, build, and export shooting templates for the Hawk recording system.



**Performance improvements**

Utilize full computing power of 64-bit architecture:

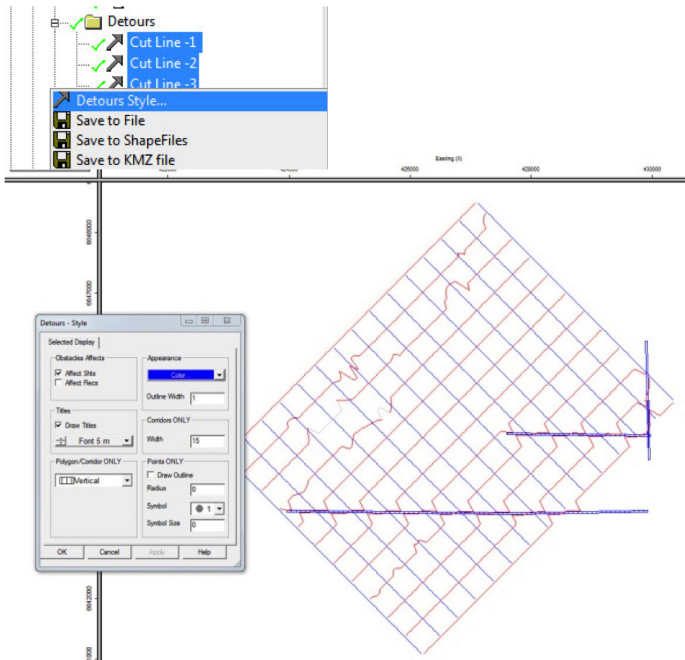
- Read and write datasets greater than 2 GB
- Access more than 4 GB of physical PC memory
- Increases performance of file I/O.

Achieve greater software performance:

- Expedite numerous land-based tasks
- Accelerate loading of P190 files
- Stabilize analyses performance on larger surveys.

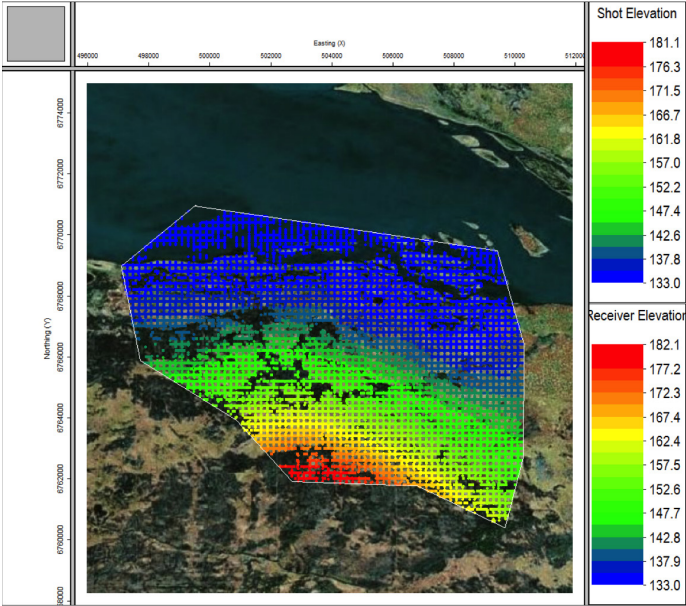
**Edit multiple obstacles or detours**

Users can now edit multiple detours or obstacles at the same time.



**Bing® Maps**

Use Bing maps to import images, obtain elevations, and create maps and grids in OMNI 3D software. Obtain data from Bing without switching between or opening other software.



**Software Sales**  
 Direct: +1 (403) 303-8692  
 Email: gedcosales@slb.com

**Software Technical Support**  
 Direct: +1 (403) 538-8999  
 Email: gedcosupport@slb.com

[software.slb.com](http://software.slb.com)